




GRO S E D E

An abstract landscape painting with soft, blended colors. The top half features shades of green and blue, suggesting a sky or distant hills. The middle section is dominated by warm, earthy tones of orange, yellow, and brown, with some darker green patches. The bottom edge is irregular and textured, with some dark green and brown spots. The overall style is painterly and artistic.

Inspired by nature,
built with artistry.

A photograph of a forest path. The path is made of light-colored gravel or dirt and leads into a dense forest of tall, thin trees. The foliage is lush and green. In the distance, two people are walking away from the camera on the path. The lighting is soft, suggesting a dappled sunlight effect.

Groveside Towns are
nestled in the perfect
setting, where you can call
nature your neighbour.

Passion, precision, and
fine Italian craftsmanship
have come together in a
modern design that flows
like a brush on canvas.



Welcome to
Groveside.

A place where life blossoms with the best that the Flower City has to offer. Designed and built with passion by a highly respected group with over 35 years of experience in high-quality construction across the GTA.

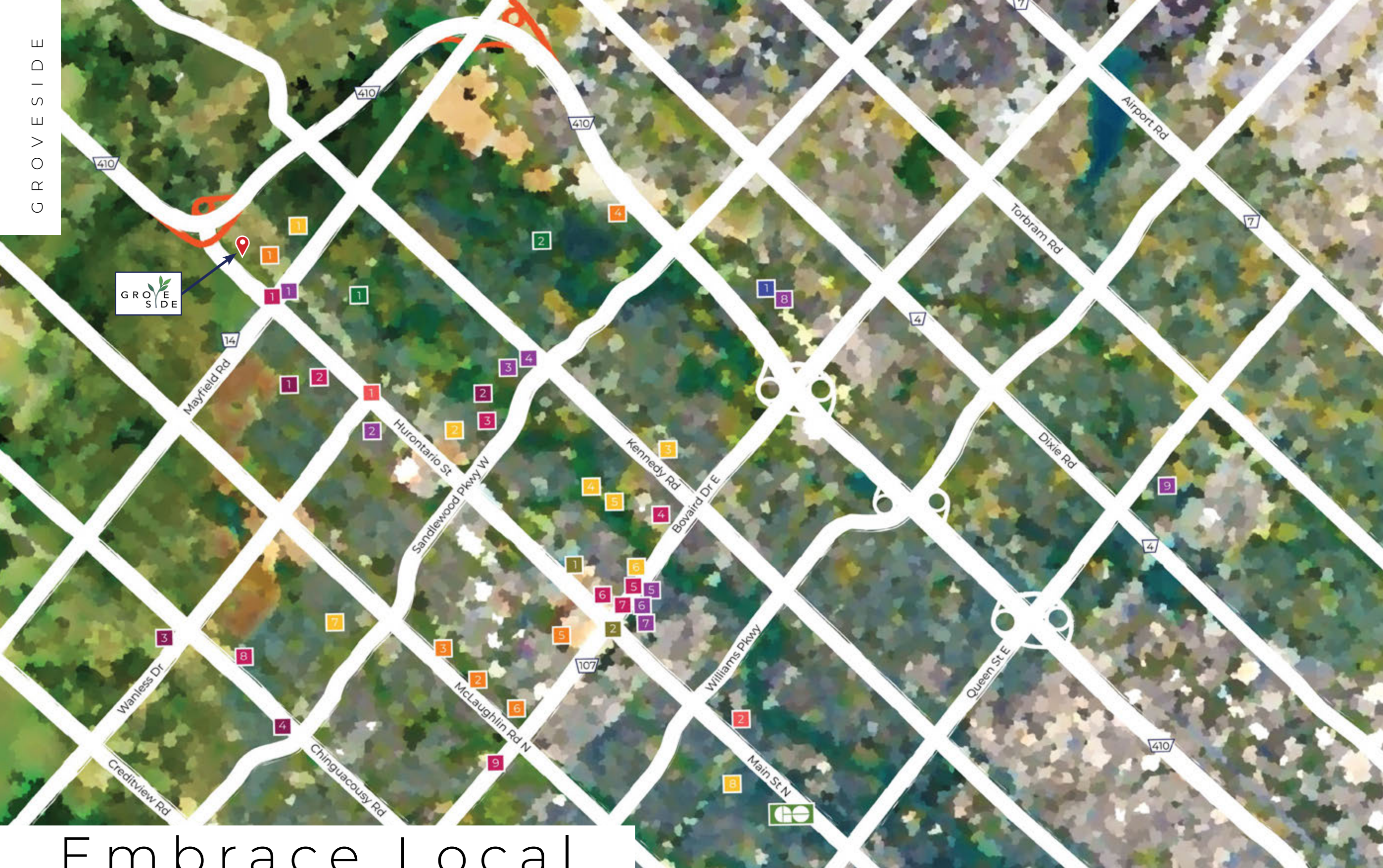


Heart Lake Conservation Park

A neighbourhood
that embraces
you back.

Picture a home where life is made easier, safer, and inclusive. Now paint yourself into that picture, and you will feel all that Groveside offers.

A community surrounded by parks and recreational spaces, fine schools, shopping centres, restaurants, places of worship, as well as transit and highway access to get you wherever life takes you.



Embrace Local

Schools

1. St. Rita Elementary
2. St. Stephen Elementary
3. Notre Dame Catholic Secondary
4. Heart Lake Secondary
5. Conestoga Public
6. Rowntree Montessori
7. Cheyne Middle School
8. Al-Ameen Elementary

Shopping

1. Sobeys
2. Food Basics
3. Sandalwood Place
4. Metro
5. Fortinos
6. Brampton Corners
7. Walmart Super Centre
8. Trinity Commons Mall
9. Bramalea City Centre

Eats

1. Tim Hortons
2. Subway
3. McDonald's
4. Swiss Chalet
5. Five Guys
6. Mary Brown's Chicken
7. Church's Texas Chicken
8. Starbucks
9. Burger King

Recreation

1. Snelgrove Community Centre
2. Loafer's Lake Recreation Centre
3. Nisbat-e-Rasooli Islamic Centre
4. Cassie Campbell Community Centre

Parks

1. Conservation Drive Park
2. Heart Lake Conservation Park

Entertainment

1. SilverCity Brampton Cinemas

Transportation

Quick access

Highway 410
Zum Transit

Close proximity

Brampton GO
Highway 407
Airport Rd.

Places of Worship

1. Church of Archangel Michael & St. Tekla
2. Brampton Islamic Centre
3. Gurdwara Sikh Sangat
4. Heart Lake Seventh-day Adventist Church
5. Shri Krishna Sudama Mandir & Cultural Sahbha
6. Shiva Ganesh Mandir

Government Offices

1. Service Ontario
2. Service Canada





CEDAR
T2 - COR. EL. A (Rev.)

MAPLE
T1 - INT. EL. A (Rev.)

MAPLE
T1 - INT. EL. A

CEDAR
T2 - COR. EL. A

Block 1



MAPLE
T1 - END. EL. B (Rev.)

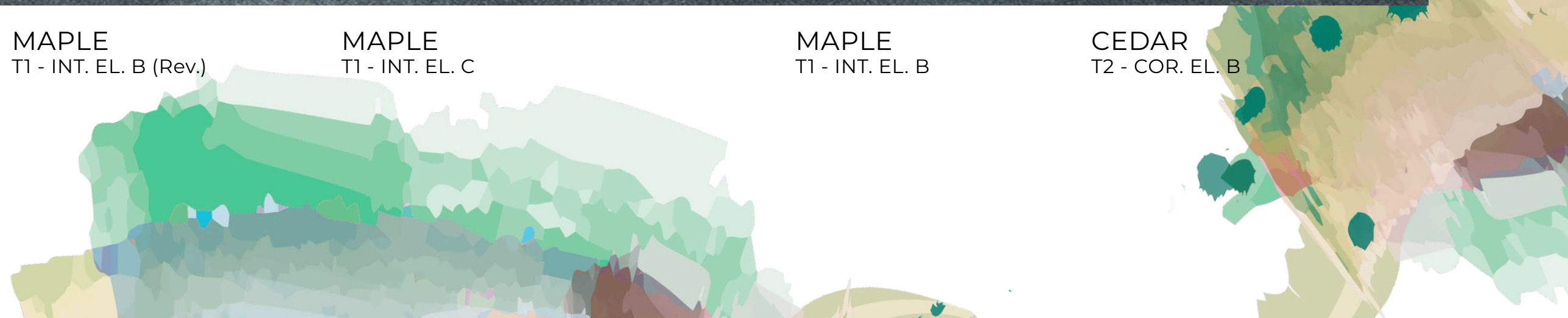
MAPLE
T1 - INT. EL. B (Rev.)

MAPLE
T1 - INT. EL. C

MAPLE
T1 - INT. EL. B

CEDAR
T2 - COR. EL. B

Block 2





CEDAR
T2 - COR. EL. A (Rev.)

MAPLE
T1 - INT. EL. A (Rev.)

MAPLE
T1 - INT. EL. A

MAPLE
T1 - END. EL. A

Block 3



WILLOW
T4 - COR. EL. A

BALSAM
T3 - INT. MOD. EL. A

BALSAM
T3 - INT. EL. A

BALSAM
T3 - INT. EL. A (Rev.)

BALSAM
T3 - INT. EL. A (Rev.)

BALSAM
T3 - END. EL. A (Rev.)

Block 4



BALSAM
T3 - END. EL. B

BALSAM
T3 - INT. EL. B

BALSAM
T3 - INT. EL. B

BALSAM
T3 - INT. EL. B

BALSAM
T3 - INT. EL. B (Rev.)

BALSAM
T3 - INT. EL. B (Rev.)

BALSAM
T3 - END. EL. B (Rev.)

Block 5



BALSAM
T3 - END. EL. A

BALSAM
T3 - INT. EL. A

BALSAM
T3 - INT. EL. A

BALSAM
T3 - INT. EL. A

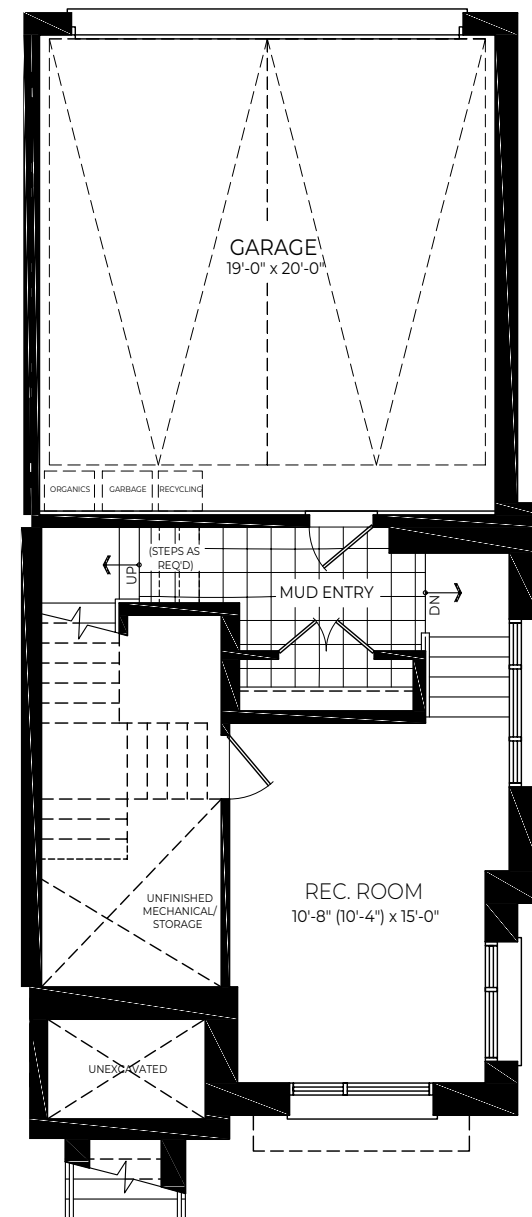
BALSAM
T3 - INT. EL. A (Rev.)

BALSAM
T3 - INT. EL. A (Rev.)

BALSAM
T3 - COR. EL. A

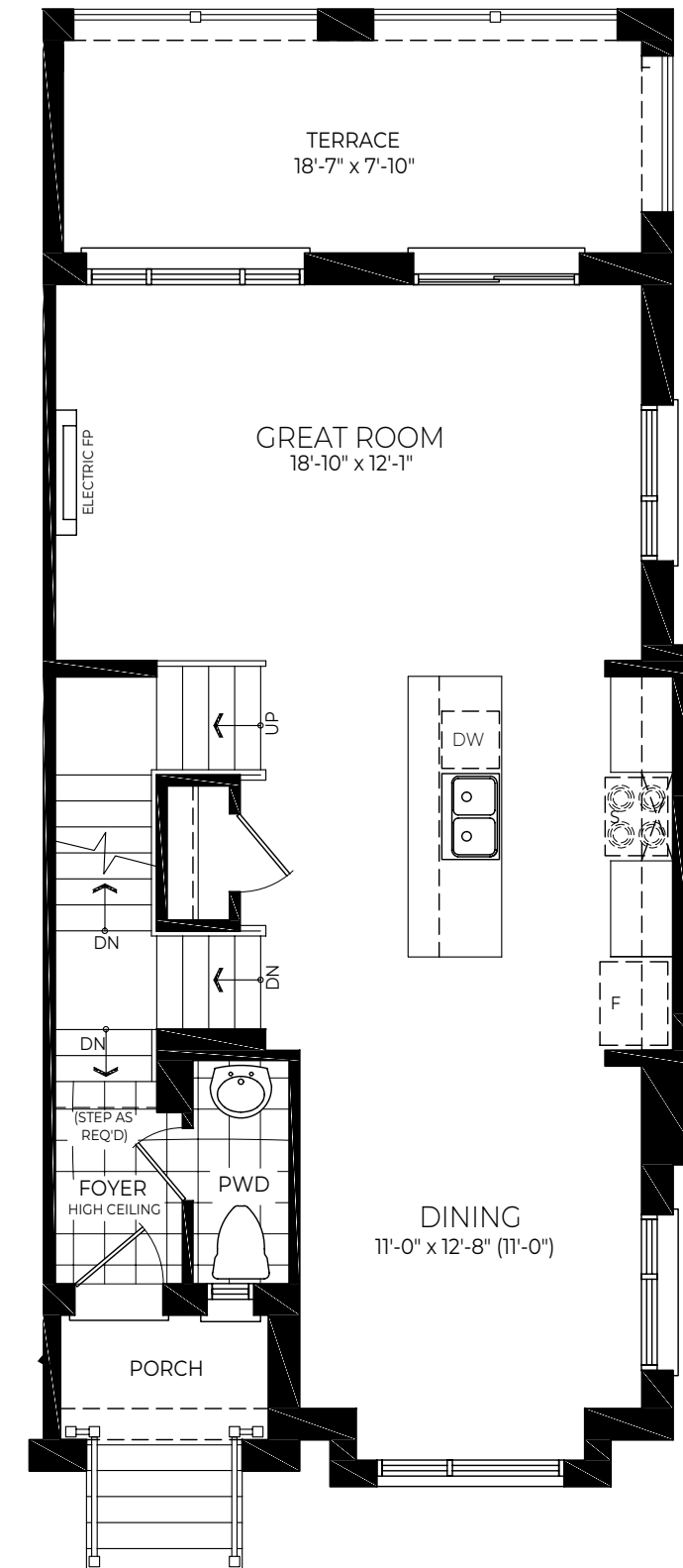
Block 6



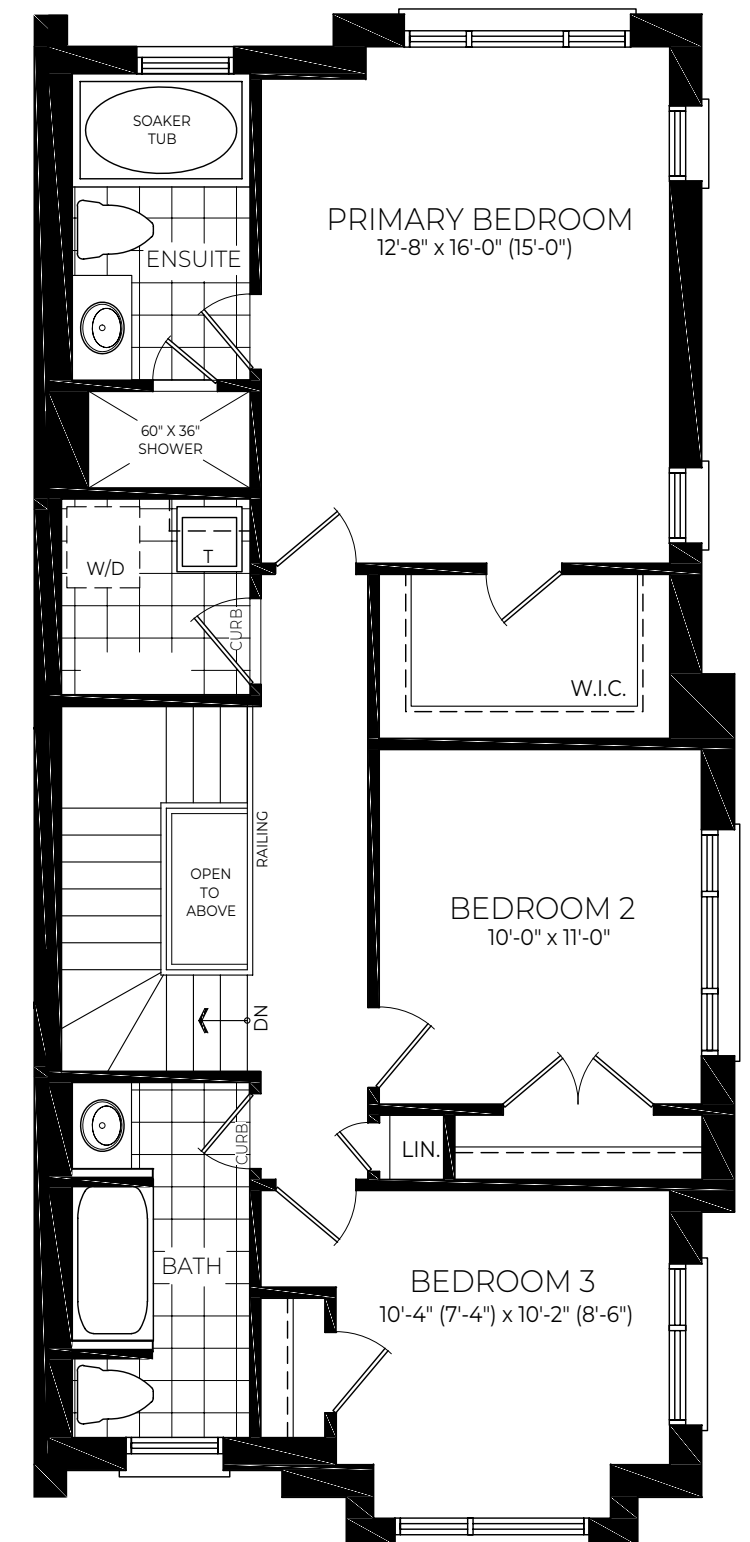


Basement

Elevation A shown. Brick color and exterior materials may change based on alternate elevations and blocks.



Main Floor



Second Floor

The
Cedar

3 Bedrooms / 2.5 Baths
T2 - COR. EL. A/B - 2060 Sq.ft.

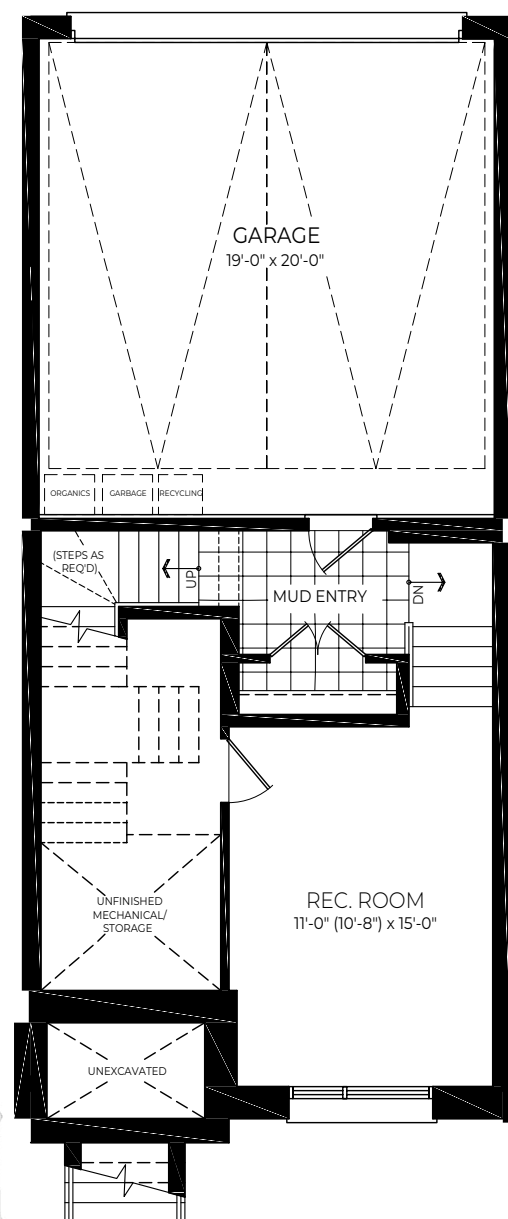


Elevation A shown. Brick color and exterior materials may change based on alternate elevations and blocks.

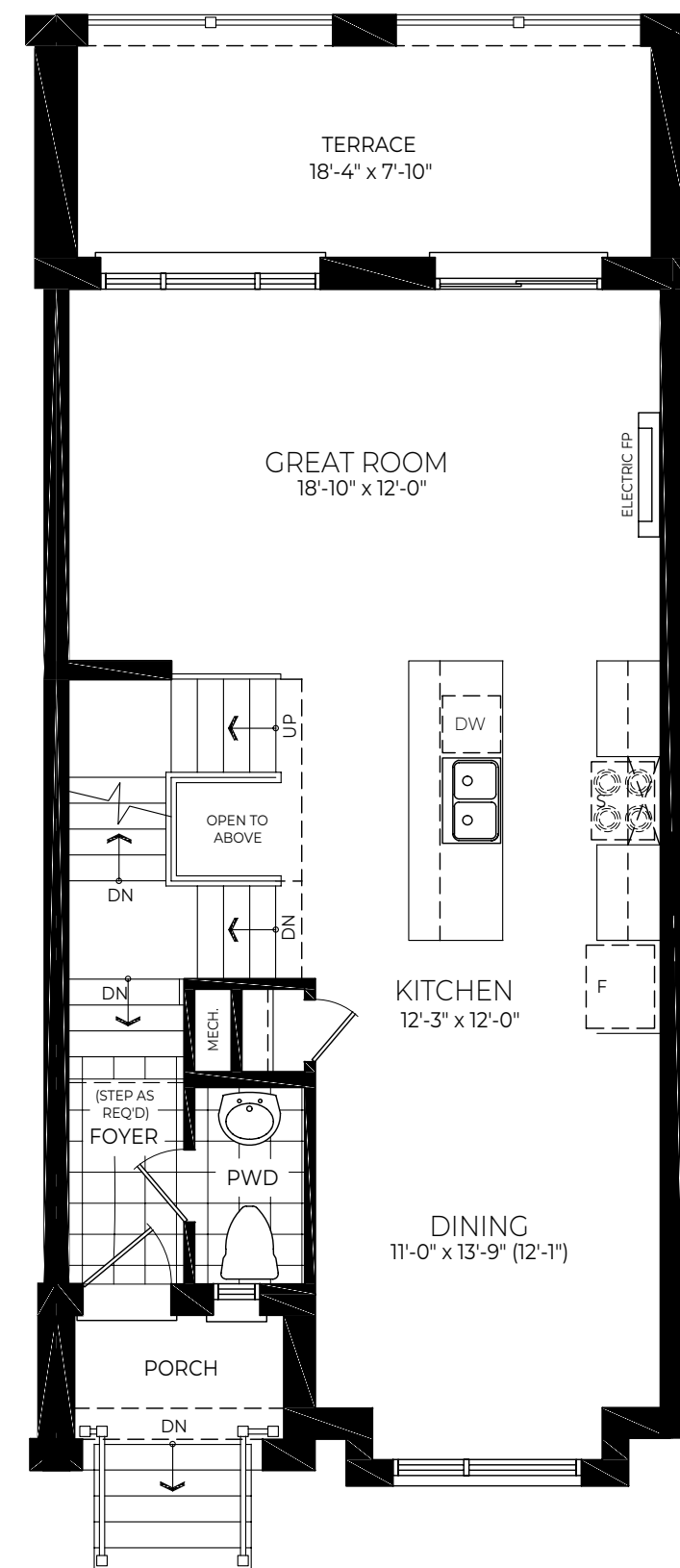
The Maple

3 Bedrooms / 2.5 Baths
T1 - INT. EL. A/B - 1923 Sq.ft.

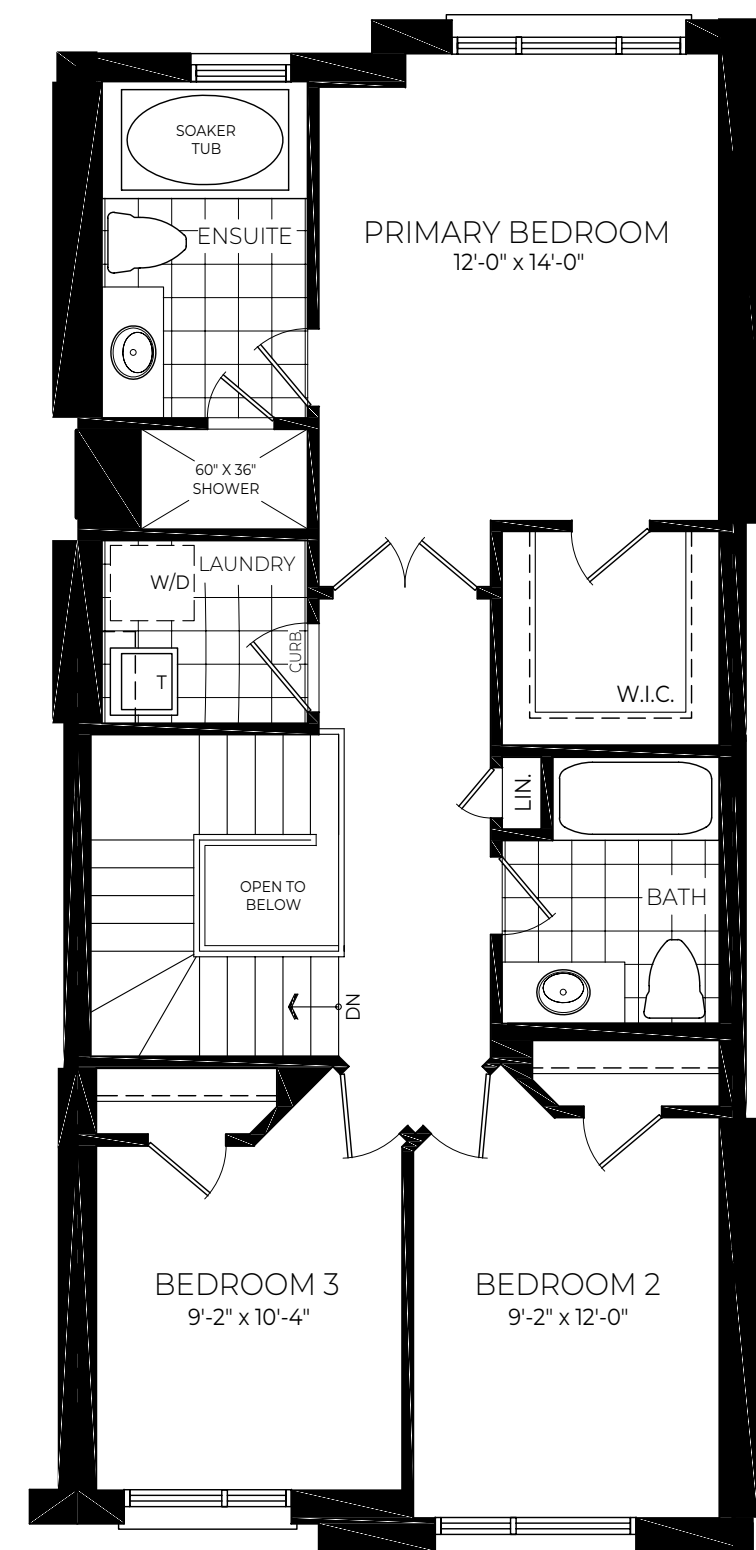
GROVESIDE



Basement



Main Floor



Second Floor

All prices, materials, dimensions and specifications are subject to change without notice. Actual usable space may vary from stated area. Rendering is artist's concept only. OCTOBER 2022. E.&O.E.

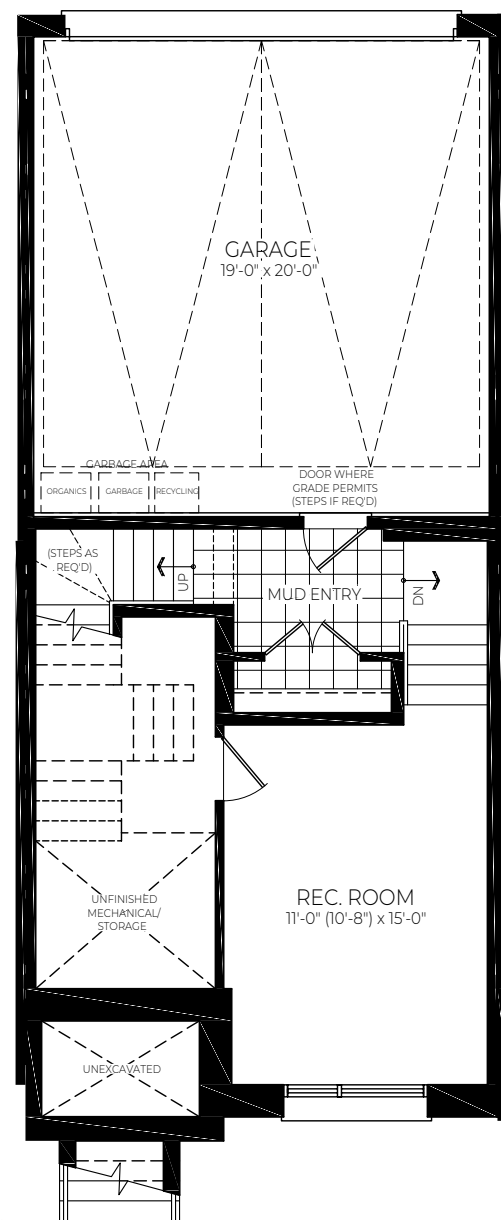


Elevation C shown. Brick color and exterior materials may change based on alternate elevations and blocks.

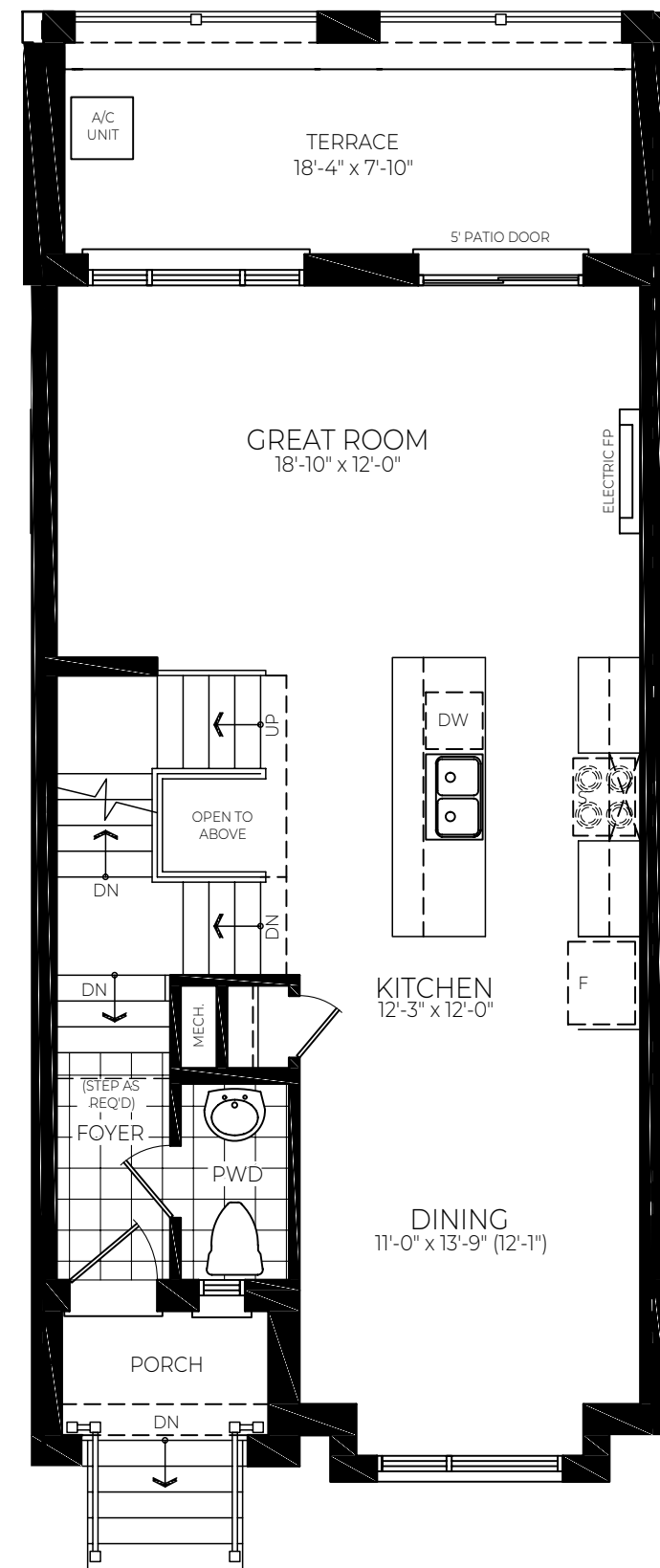
The Maple

3 Bedrooms / 2.5 Baths
T1 - INT. EL. C - 1937 Sq.ft.

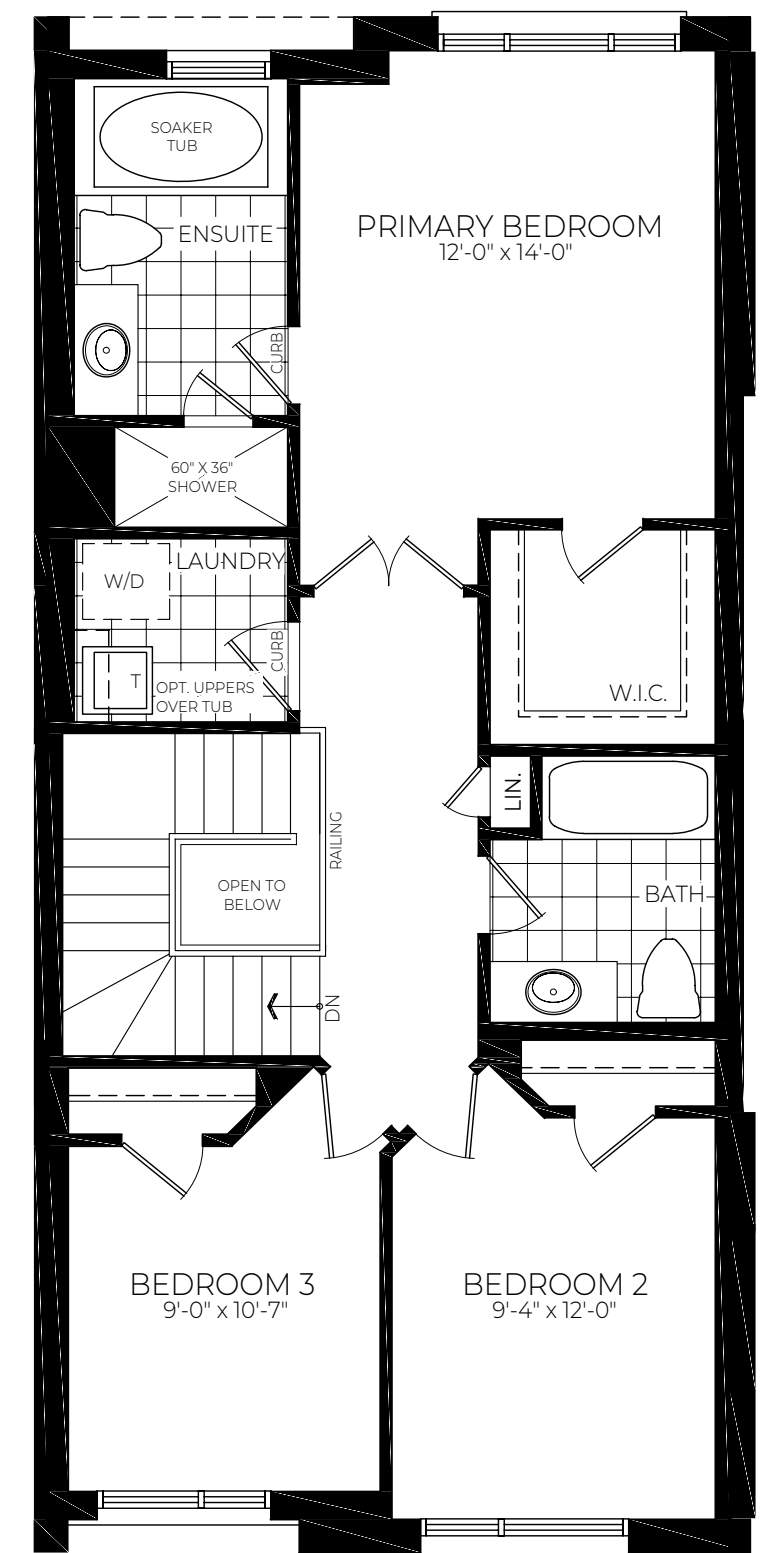
GROVESIDE



Basement



Main Floor



Second Floor

All prices, materials, dimensions and specifications are subject to change without notice. Actual usable space may vary from stated area. Rendering is artist's concept only. OCTOBER 2022. E.&O.E.



A/C UNIT

TERRACE
18'-7" x 7'-10"

5' PATIO DOOR

ELECTRIC FP

GREAT ROOM
18'-10" x 12'-0"

DW

KITCHEN
12'-3" x 12'-0"

F

DINING
11'-0" x 13'-9" (12'-1")

MECH.

OPEN TO ABOVE

UP

DN

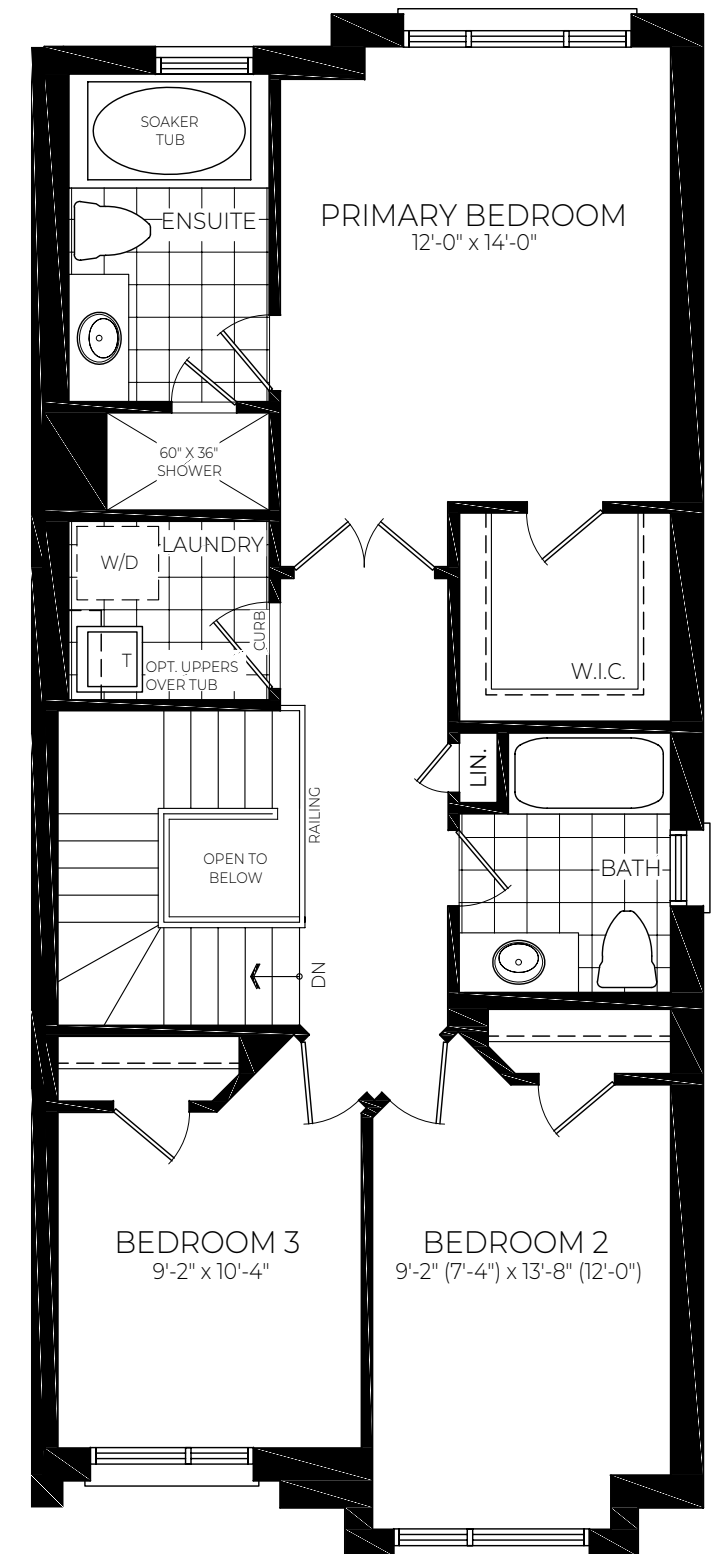
FOYER
(STEP AS REQ'D)

PWD

PORCH

DN

Main Floor

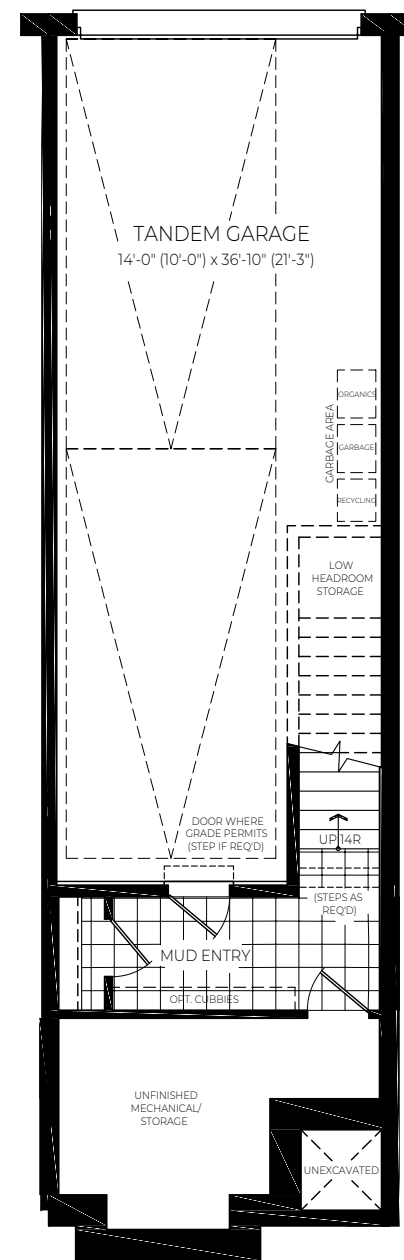


Second Floor

The Maple

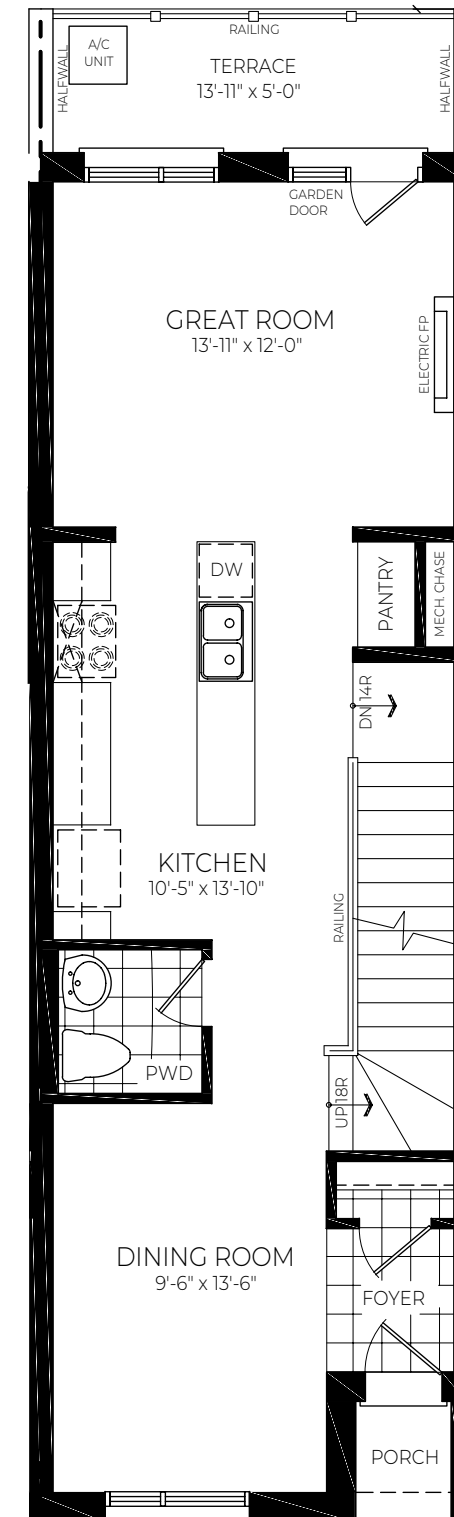
3 Bedrooms / 2.5 Baths
T1 - END. EL. A/B - 2018 Sq.ft.

All prices, materials, dimensions and specifications are subject to change without notice. Actual usable space may vary from stated area. Rendering is artist's concept only. OCTOBER 2022. E.&O.E.

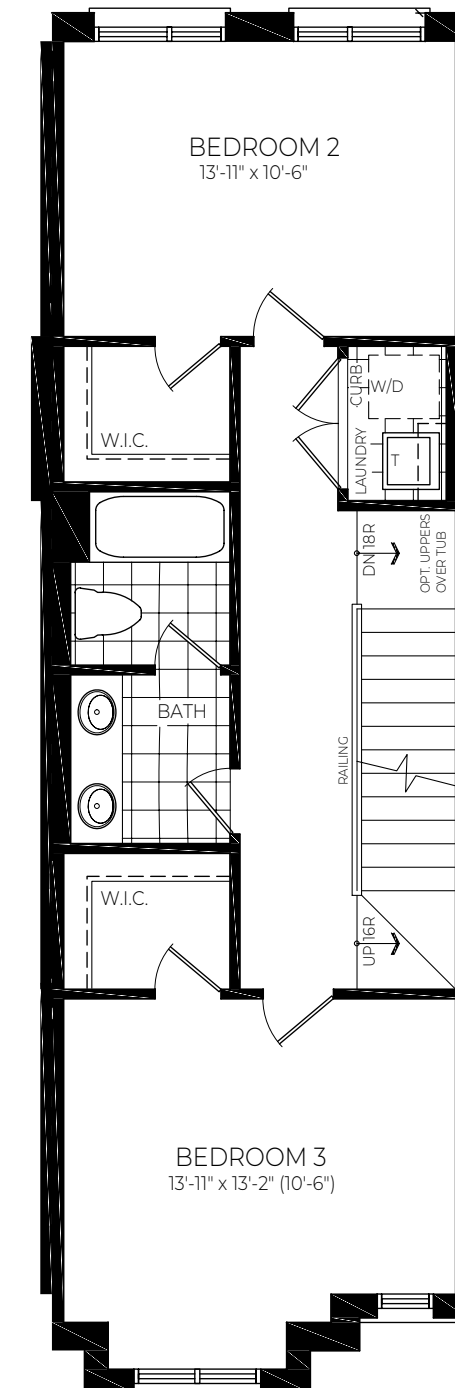


Basement

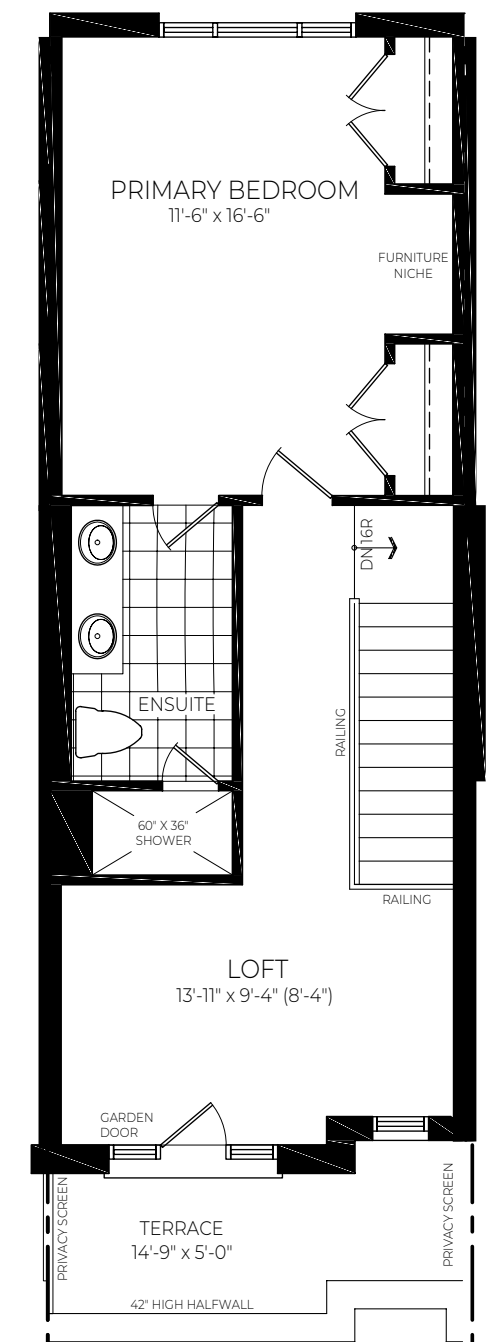
Elevation A shown. Brick color and exterior materials may change based on alternate elevations and blocks.



Main Floor



Second Floor

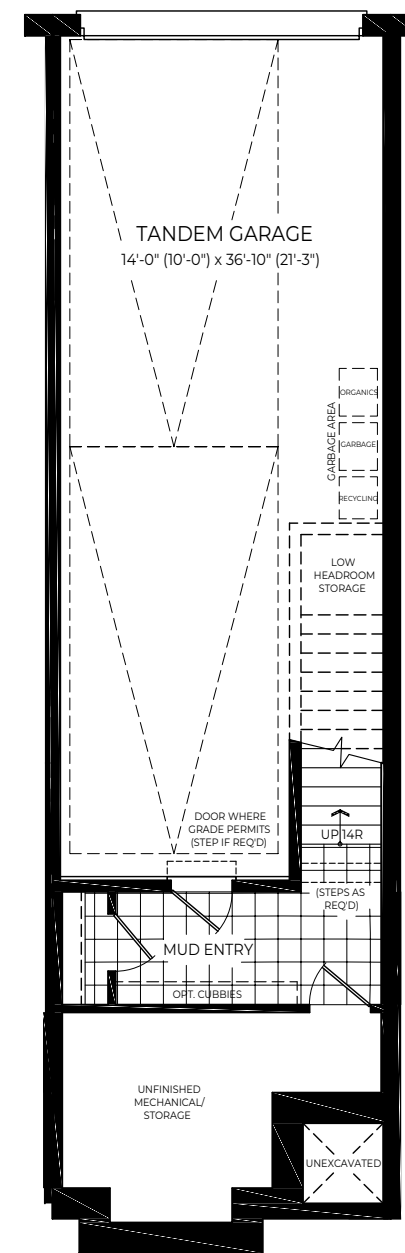


Third Floor

The Balsam

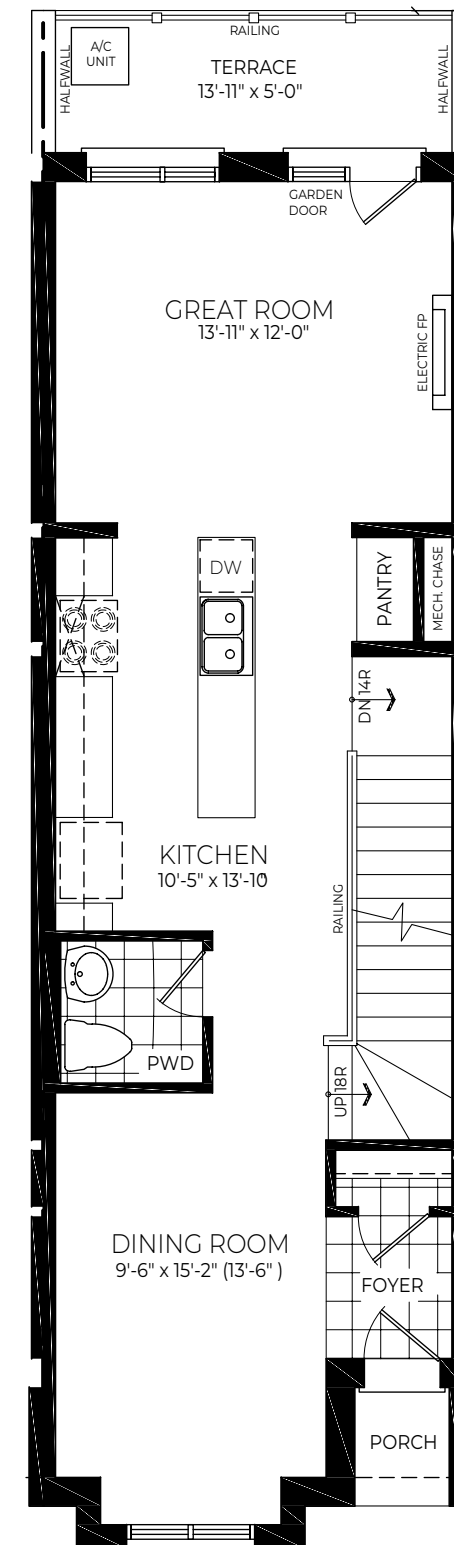
3 Bedrooms / 2.5 Baths
T3 - INT. EL. A - 2094 Sq.ft.

All prices, materials, dimensions and specifications are subject to change without notice. Actual usable space may vary from stated area. Rendering is artist's concept only. OCTOBER 2022. E.&O.E.

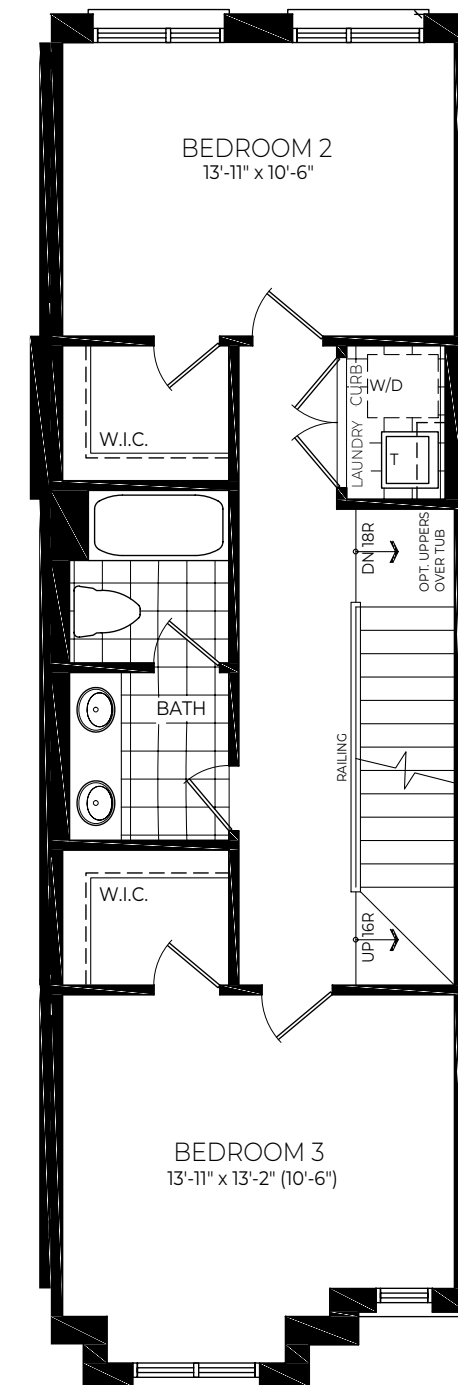


Basement

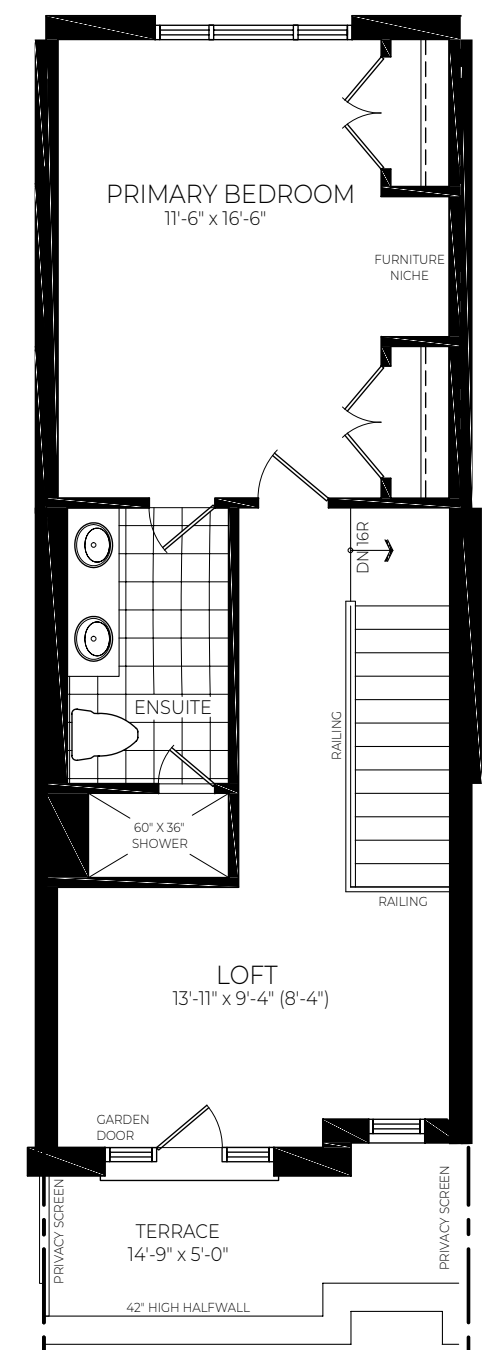
Elevation B shown. Brick color and exterior materials may change based on alternate elevations and blocks.



Main Floor



Second Floor

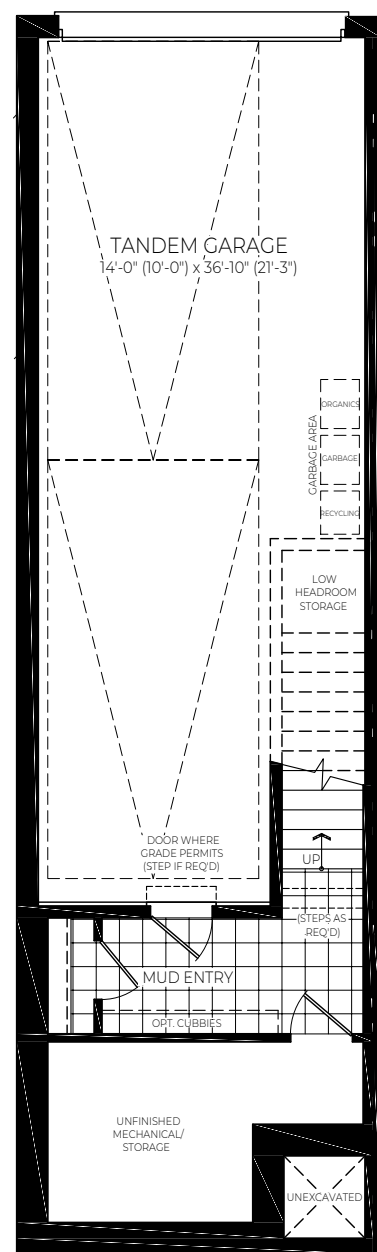


Third Floor

The Balsam

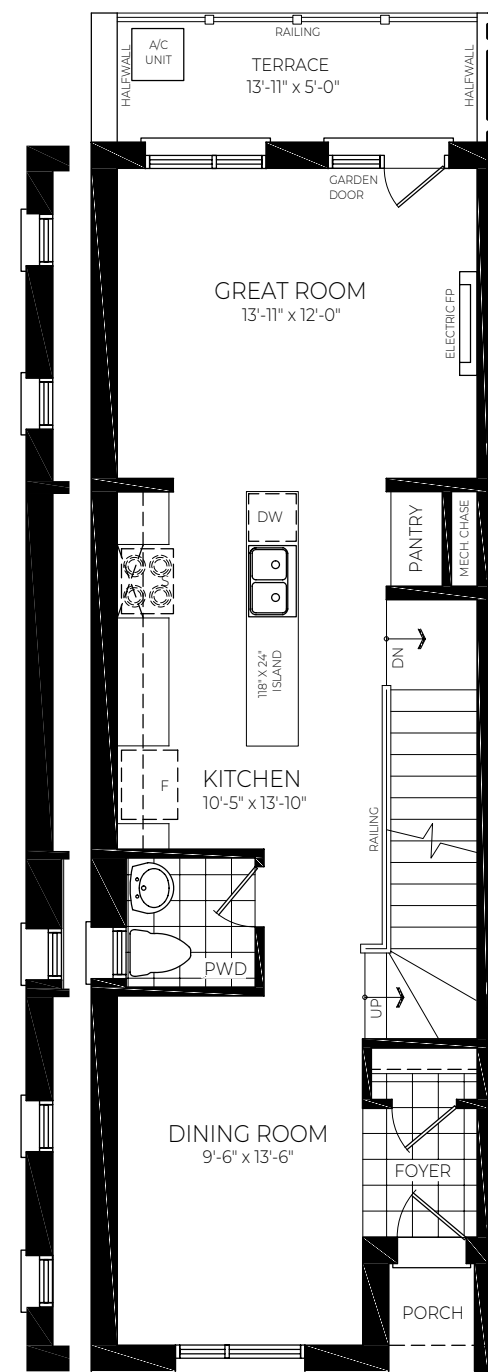
3 Bedrooms / 2.5 Baths
T3 - INT. EL. B - 2106 Sq.ft.

All prices, materials, dimensions and specifications are subject to change without notice. Actual usable space may vary from stated area. Rendering is artist's concept only. OCTOBER 2022. E.&O.E.



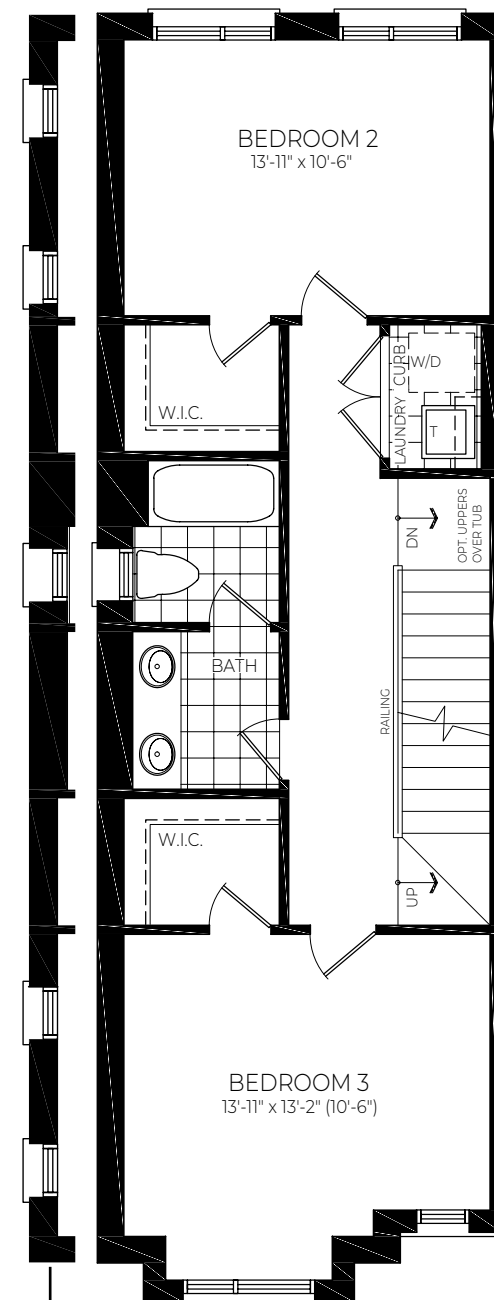
Basement

Elevation A shown. Brick color and exterior materials may change based on alternate elevations and blocks.



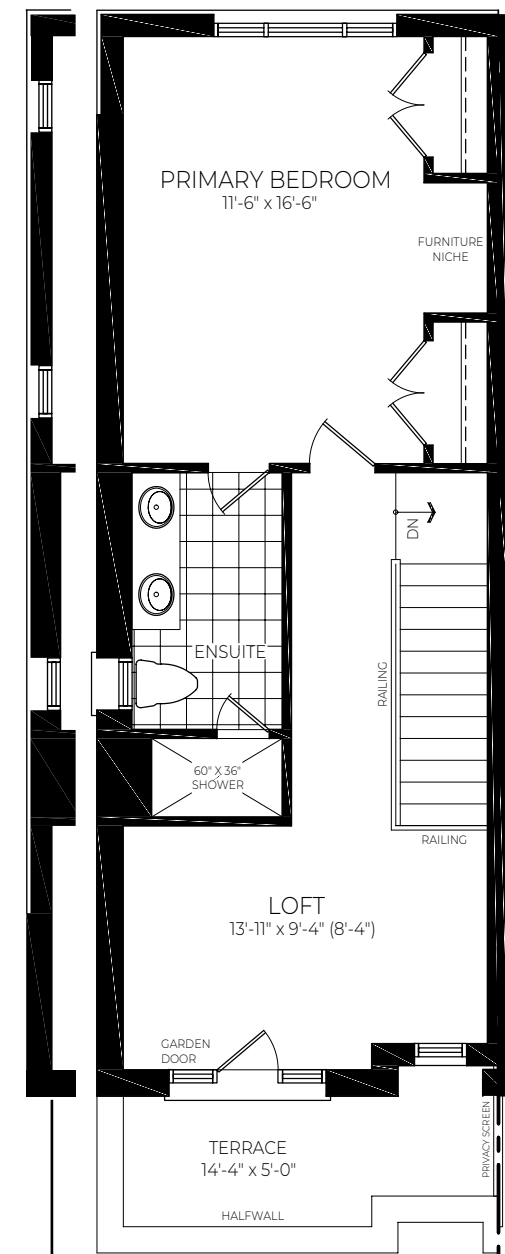
T3- COR. EL A shown.

Main Floor



T3- COR. EL A shown.

Second Floor



T3- COR. EL A shown.

Third Floor

The Balsam

3 Bedrooms / 2.5 Baths
T3 - END. EL. A & COR. EL. A - 2176 Sq.ft.

All prices, materials, dimensions and specifications are subject to change without notice. Actual usable space may vary from stated area. Rendering is artist's concept only. OCTOBER 2022. E.&O.E.



Make your home a masterpiece. Bespoke interior options curated by our design team allow you to customize your space with the help of our pre-selected design finishes and make it your own version of perfection.

For complete details and information visit
[GROVESIDETOWNS.COM](https://grovesidetowns.com)

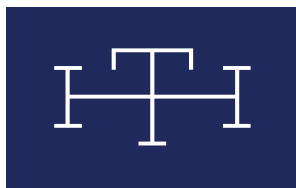
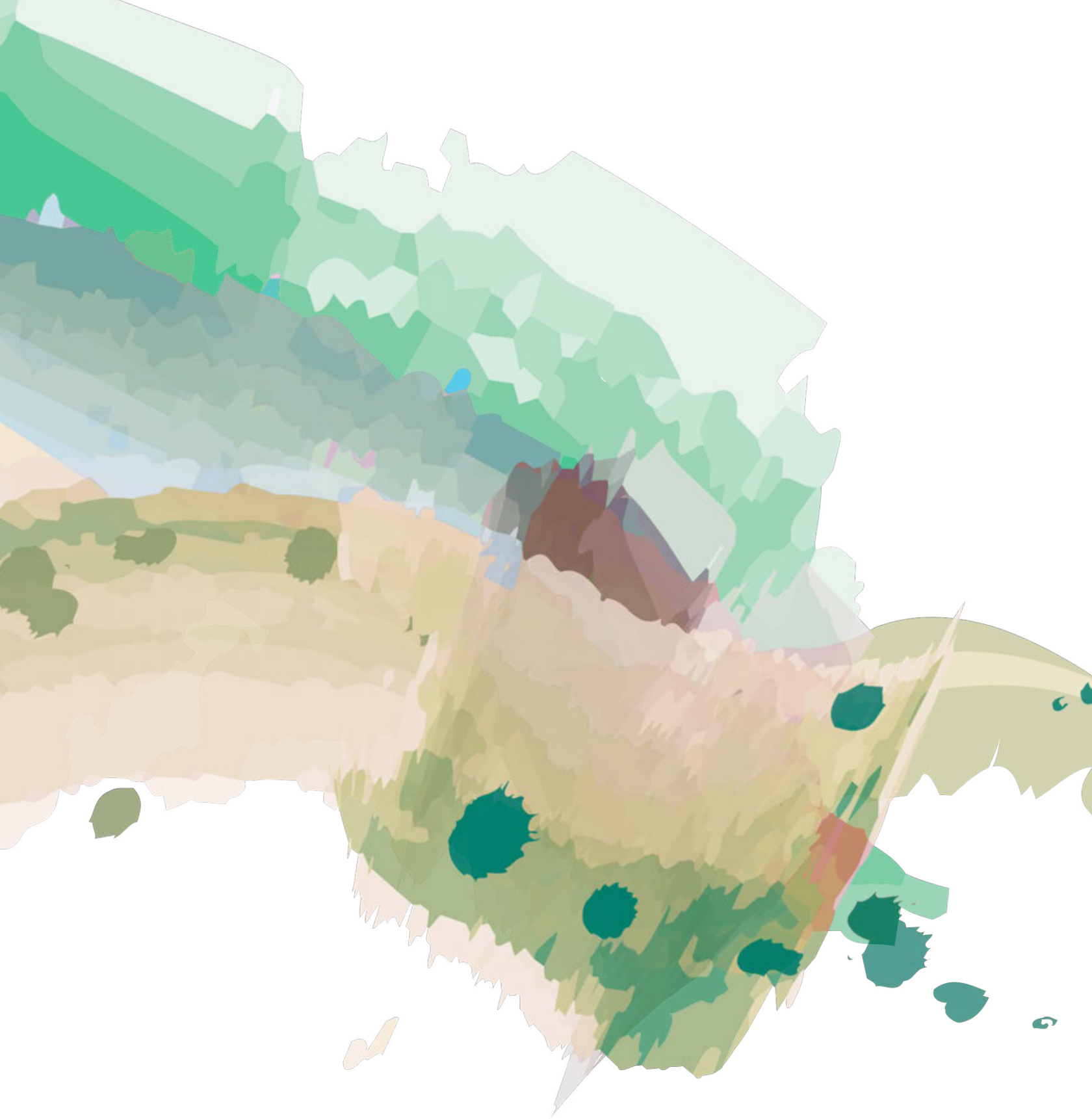


Treviso Homes stands on pillars of experience, trustworthiness, and detail-oriented craftsmanship. We take pride in offering the highest levels of customer care, and the precision of our work is defined by more than 35 years of fine Italian craftsmanship. In addition to building communities like Groveside, our history includes projects such as custom housing, places of worship, recreational facilities and many more.



TREVISO
HOMES





TREVISIO
H O M E S

TREVISOHOMES.CA